

PUMP STRESS TEST



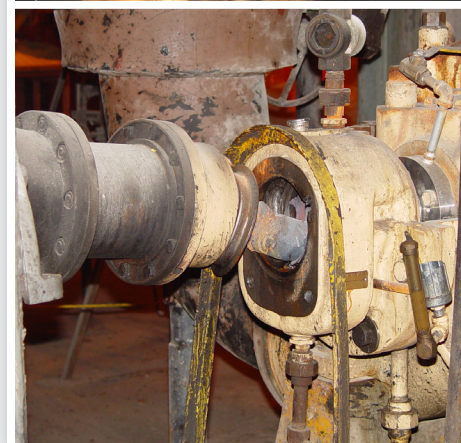
**Does crisis-driven
pump repair give
you stress?**

**Our Pump Stress Test
can help.**

VESSCO INC. offers pump health audits to help
you manage scheduled costs, improve reliability,
and avoid emergency-driven nightmares.



CALL (952) 941-2678



WARNING

**IF YOU
DON'T SCHEDULE
MAINTENANCE,
YOUR EQUIPMENT
WILL SCHEDULE
IT FOR YOU.**

STRESS TEST

Pump Stress Test Scope:

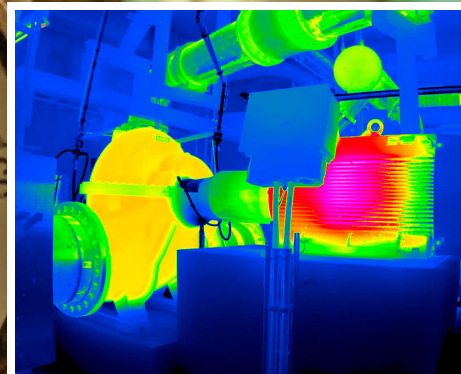
- Collect data, identify hydraulic, mechanical, structural, and system discrepancies.
- Rate the severity of each issue to identify potential pump failures and make sound recommendations to correct the issues.
- Generate and submit a formal report to the client.

AUDIT INCLUDES BUT NOT LIMITED TO:

- **PUMP EFFICIENCY:** calculated when instrumentation is present.
- **PUMP LOAD:** plot and verify AOR / POR operation, check for recirculation issues.
- **VIBRATION ANALYSIS:** rate amplitude severity, analyze spectrums and TWF for cause of issue(s).
- **SYSTEM EVALUATION:** verify NPSHA, venting, priming, cavitation, and flashing.
- **GENERAL MECHANICAL / VISUAL:** installation integrity, high speed video, and thermal imaging.
- **BEARING INTEGRITY:** lubrication supply, contamination, cooling, breathing, and sealing.
- **STRUCTURAL CHECKS:** pump bases, grout, expansion joints, piping supports, and resonance.
- **MECHANICAL SEALS AND PACKING:** run-out, flush plan assessment, and mechanical integrity.



CALL (952) 941-2678



THROUGH A COMPREHENSIVE
EVALUATION USING THE MOST
ADVANCED EQUIPMENT, WE
COLLECT DATA TO IDENTIFY
HYDRAULIC, MECHANICAL,
STRUCTURAL, AND SYSTEM
DISCREPANCIES.

STRESS RELIEF



Our Pump Stress Test report provides the critical insight, and expert advice you need to improve your pump's health.

Get the information you need to better manage equipment and costs.



**REDUCE
HIGH VENDOR &
OVERTIME COSTS**



**IMPROVE
RELIABILITY &
AVOID DOWNTIME**



**LOWER
YOUR PERSONAL
STRESS**

**BOOK YOUR TEST TODAY!
CALL (952) 941-2678**

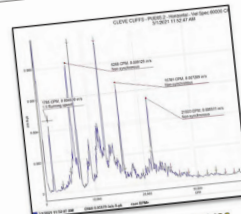


HEATER DRAINS PUMP

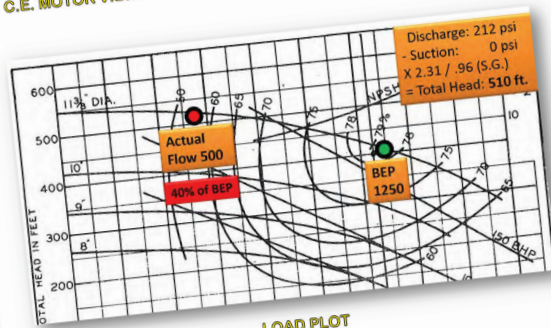
- Discharge pressure: 212 psi, running at 40% of BEP. Catastrophic failure may result.
- Increase load to at least 70% of BEP immediately.
- Coupling end motor bearing vibration shows several non-synchronous peaks with multiple orders, which may signify bearing defects. Although amplitudes are low, these defects are detectable with a stethoscope.
- Monitor vibration for further increases.



C.E. MOTOR VIBRATION CHECK



C.E. MOTOR SPECTRUM



LOAD PLOT

Kennedy Industries Inc. • 4925 Holtz Dr. Wixom, MI 48393 • www.kennedyind.com

8

Condition Codes:

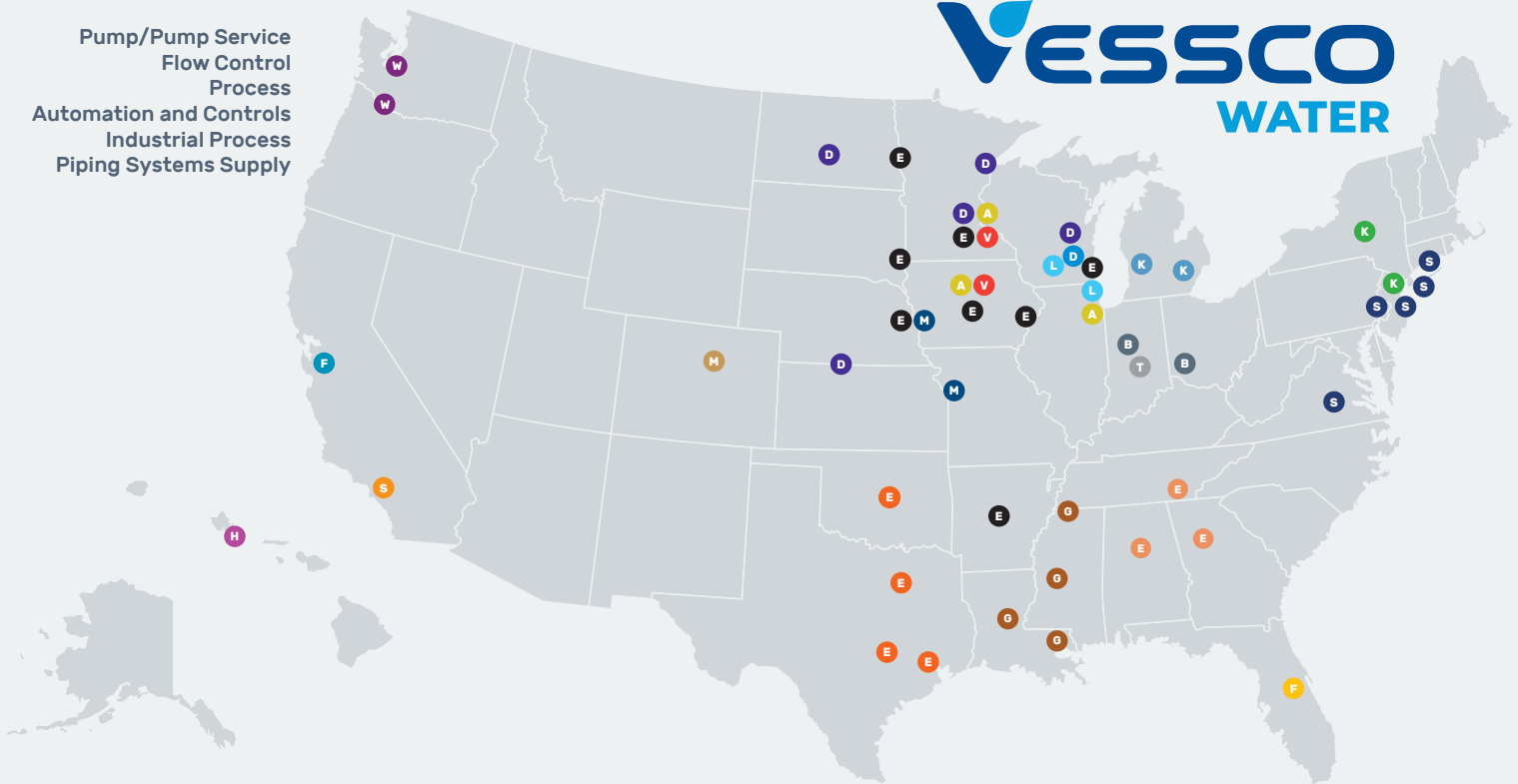
- Severe
- Moderate
- Minor
- Ⓡ Recommendations
- Ⓒ Comment

**OUR COMPREHENSIVE PUMP
STRESS TEST, AND SET OF
CLEAR RECOMMENDATIONS
CAN IMPROVE RELIABILITY
AND HELP PREVENT COSTLY
EMERGENCY REPAIRS.**

THE COMPANIES OF VESCO WATER

HEADQUARTERS AND SERVICE CENTER LOCATIONS

Pump/Pump Service
Flow Control
Process
Automation and Controls
Industrial Process
Piping Systems Supply



VESSCO
WATER

 <p>AUTOMATIC SYSTEMS CO. automaticsystemsco.com</p>	 <p>BL ANDERSON blanderson.com</p>	 <p>DORNER dornerco.com</p>	 <p>DUNCAN CO. duncanco.com</p>	 <p>ECO-TECH, INC. eco2tech.com</p>
 <p>ELECTRIC PUMP electricpump.com</p>	 <p>EI² Environmental Improvements, Inc. ei2texas.com</p>	 <p>FLUID CONTROL SPECIALTIES, INC. fluidcontrolspect.com</p>	 <p>FRANK OLSEN COMPANY frankaolsen.com</p>	 <p>Gulf States Engineering Co., Inc. Engineered Products for Process and Power gsengr.com</p>
 <p>HAWAII ENGINEERING SERVICES hiengineering.com</p>	 <p>KENNEDY INDUSTRIES PUMPING-REPAIR FLOW CONTROL PROCESS AUTOMATION kennedyind.com</p>	 <p>KOESTER koesterassociates.com</p>	 <p>LAI, Ltd. Since 1958 lai-ltd.com</p>	 <p>Mellen Associates Inc. melleninc.com</p>
 <p>MUNICIPAL TREATMENT EQUIPMENT municipaltreatment.com</p>	 <p>Santa Fe Water Systems sfwsystems.com</p>	 <p>SHERWOOD LOGAN sherwoodlogan.com</p>	 <p>TORIC ENGINEERING toriceng.com</p>	 <p>VESSCO INC. vessco.com</p>
 <p>WECI Whitney Equipment Company, Inc. weci.com</p>				